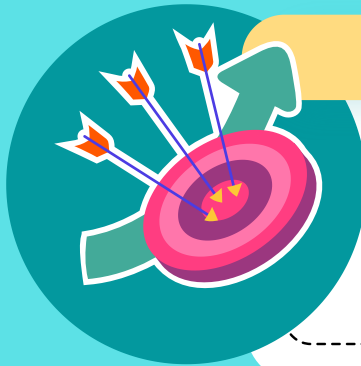


You're invited to apply to the Family and Group Child Care Home Committee



The Purpose

To form a culturally relevant and diverse group of Family Child Care Home (FCCH) and Group Child Care Home (GCCH) Educators that is representative of the state of Pennsylvania.

This group of child care providers will connect to celebrate and share their strengths and uniqueness with each other.



Discussions regarding resources, opportunities, and concerns specific to FCCH and GCCH providers

Discuss state and federal updates and initiatives and how they relate to your business.



Opportunities to share your strengths and struggles with other FCCH and GCCH

Collaborate with other professionals and identify strategies to lift up your message.



Opportunities to focus on your well-being.

Develop and enhance your leadership skills to give voice to the importance of FCCH and GCCH in the field of early childhood education.

Overcome challenges and enhance the quality-of-care provided to the children and families you serve.



Meetings will be held virtually by Zoom in the evening, on a quarterly basis, with the opportunity to meet with the FCCH Coordinator during monthly office hours. Date and time of first meeting is to be announced.

If you were an initial member of the FCCH or GCCH Workgroup, or are interested in lending your voice by joining this exciting and important networking opportunity, [please click here to share your interest](#). Sign up by March 20, 2023!